



ZIPRO-D • INNI-CERA • ZIPROS

ZIPRO-D DENTAL

3D-printing the quality of prosthetics for mass
production in many different types



AON Co.,Ltd.

#2508 A-DONG, GUNPO IT VALLEY BUILDING, 17 GOSANRO 148
BEON-GIL, GUNPO-SI, GYEONGGI-DO, REPUBLIC OF KOREA, 15850

FAX +82-31-689-5019 PHONE +82-31-689-5012

Homepage www.aoninni.com

AON - CT02

Product design or specification is subject to change without prior notice for enhancement of product performance.

CONTENTS

01 . ZIPRO-D

ZIPRO-D Dental 3D Printer	03
---------------------------	----

02 . INNI-CERA

Zirconia Slurry	06
-----------------	----

03 . ZIPROS

Slicing Software	08
------------------	----

04 . Clinical Cases

Pusan Univ / Korea Univ / Dental Clinic	10
---	----

SOCIAL NETWORK SERVICES



INSTAGRAM
AON_CO_LTD



KAKAO CHANNEL
AON CO.,LTD.



FACEBOOK
AON CO.,LTD.

FIRST MOVER AON
BEGINS NEW PARADIGM
FOR 3D PRINTING OF PROSTHETICS
WITH ZIRCONIA SLURRY





ZIPRO-D

ZIPRO-D Dental, bio-ceramic 3D Printer has been invented by AON Co.,Ltd with Korean technology and aimed to provide the quality of dental restoration to dental labs all over the world



Online Service

A/S service in timely and kind manner



7.0 Inch Full Touch Panel

7.0 inch LCD touch panel offers easy and user-friendly UI



Low Management Cost

No consumables other than Zirconia slurry need to be replaced



High Precision & Accuracy

ZIPRO-D can 3D-print small-sized, complicated, sophisticated prosthetics in high and excellent precision and accuracy



Easy Data Transfer

The sliced STL file can be easily transferred from PC where ZIPROS is installed to ZIPRO-D via WIFI or USB or serial cable

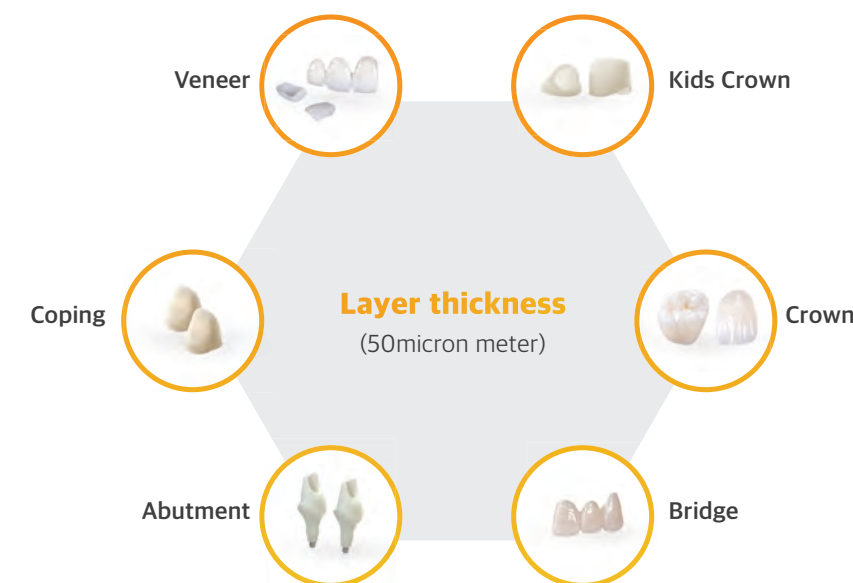


UV Light intensity Control

ZIPRO-D can get Zirconia slurry perfectly hardened with capability of controlling intensity of UV light

QUICKLY AND PRECISELY 3D-PRINTING THE COMPLICATED, SOPHISTICATED CURVED SURFACES AND GROOVES

Precisely 3D-printing the quality of prosthetics having complicated curved surfaces, sophisticated groove, Crowns may have 280 to 350 layers depending on the size, 3D-printing of crowns takes around 1 hour per each 100 layers



PRODUCT	ZIPRO-D
Size	510mm x 540mm x 650mm
Weight	53kg / 117lbs
Box Size / Weight	560mm x 640mm x 860mm / 73kg
Ambient Temperature	15~35°C / 59~95°F
AC Adaptor	AC 100~240V, 50/60Hz, 96~136VA
Printing Technology	DLP (Digital Light Processing)
Build Size	76.8mm x 43.2mm x 65mm
Pixel Resolution	40μm
Pixel Size	1920 x 1080
Layer Thickness	50 micron meter
Source of Light	405nm



INNI - CERA

INNI-CERA, liquid Zirconia material is the cutting-edged bio-ceramic material for the quality of prosthetic and aimed to produce many different types of prosthetics in a mass volume at a time restorations with the dedicated 3D-printer, ZIPRO-D

FDA Cleared **CE** 2195



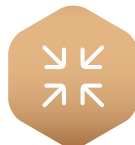
Natural color shade and translucency

AON produces INNI-CERA in A0, A1, A2 color shade appearing like color of natural teeth. Translucency of INNI-CERA is 39% at max.



Excellent flexural strength

Prosthetics 3D-printed by ZIPRO-D appears excellent flex-ural strength around 900–1000MPa



Perfect shrinkage ratio

Perfect shrinkage ratios by prosthetic product are offered to get higher accuracy



Verified biocompatible material

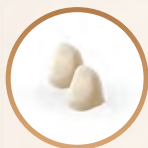
Biocompatible material verified by CE certificate and FDA 510k approval

PRODUCT	INNI - CERA
Type	BCM - W500 / BCM - W1000
Material	Liquid Zirconia
Case Size	61mm x 130mm / 72mm x 166mm
Weight	500g / 1kg
Usage	Production of dental restorations



A PERFECT SOLUTION TO 3D-PRINT PROSTHETICS

3D-printing with 1Kg INNI-CERA on average



Copings
250



Veneers
350



Kid Crowns
200



Crowns
180



3 - Bridges
60



Abutments
200

Dental restorations



ZIPROS

The slicing software is user-friendly and easy to use and automatically generate supporters by multiple times of mouse-clickings



USER-FRIENDLY, EASY AND CONVENIENT SLICING SOFTWARE FOR ZIPRO-D

PC Requirment (Windows O/S)

MINIMAL REQUIREMENT	
System	Windows 7 above (x64)
Processor	Intel Pentium4 Processor above
Memory	2GB RAM
Resolution	SXGA (1280 x 1024)
Graphic	OpenGL or OpenGL 512MB
Storage	500MB and above

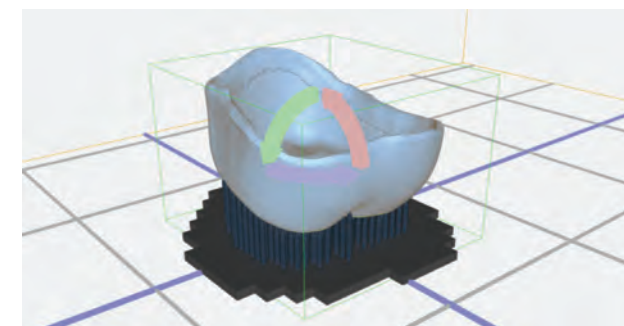
RECOMMENDED REQUIREMENT	
System	Windows 10 above (x64)
Processor	Intel Core i5 / i7 / i9
Memory	8GB RAM
Resolution	FHD (1920 x 1080)
Graphic	Geforce GTX or OpenGL 4.2 2GB
Storage	10GB and above

PC Requirment (Mac O/S)

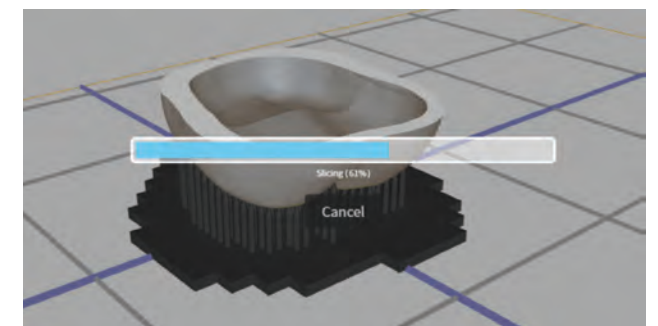
MINIMAL REQUIREMENT	
System	OS X 10.10 (x64)
Processor	Intel Processor (x64)
Memory	2GB RAM
Resolution	SXGA (1280 x 1024)
Graphic	OpenGL or OpenGL 512MB
Storage	500MB and above

RECOMMENDED REQUIREMENT	
System	OS X (x64) latest Version
Processor	Intel Core i5 / i7 / i9
Memory	8GB RAM
Resolution	FHD (1920 x 1080)
Graphic	Geforce GTX or OpenGL 4.2 2GB
Storage	10GB and above

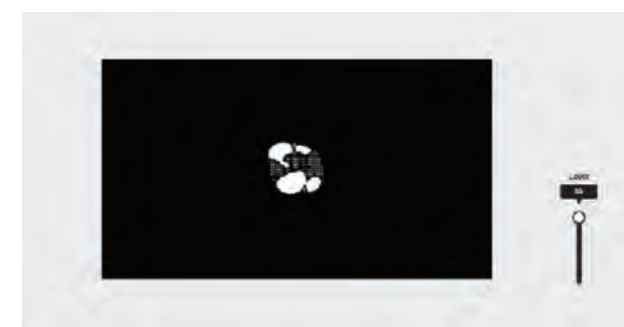
Software Features



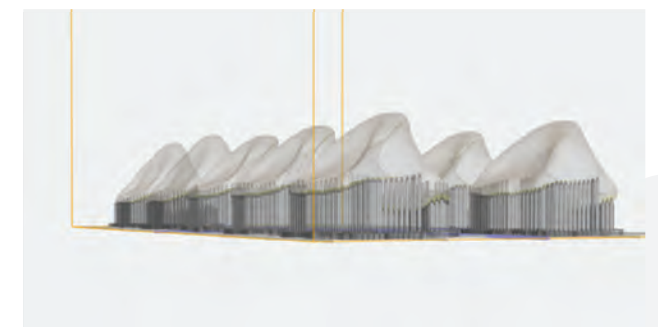
Easy Interface, UI



Progress bar for visualization



Intuitive slicing layer analysis



Automatic supporter generating functions

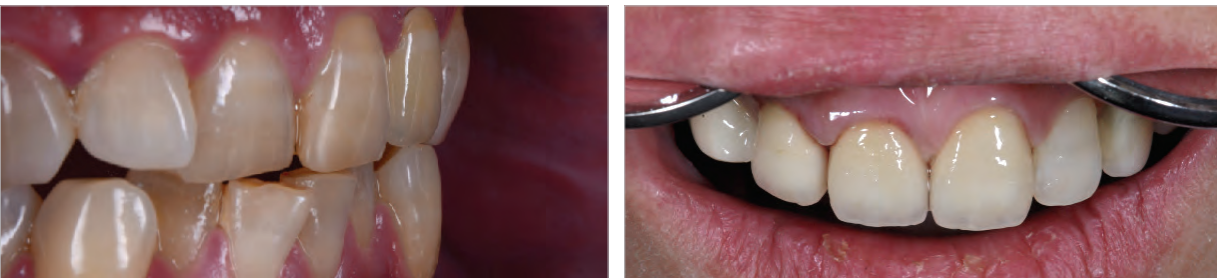
CLINICAL CASES



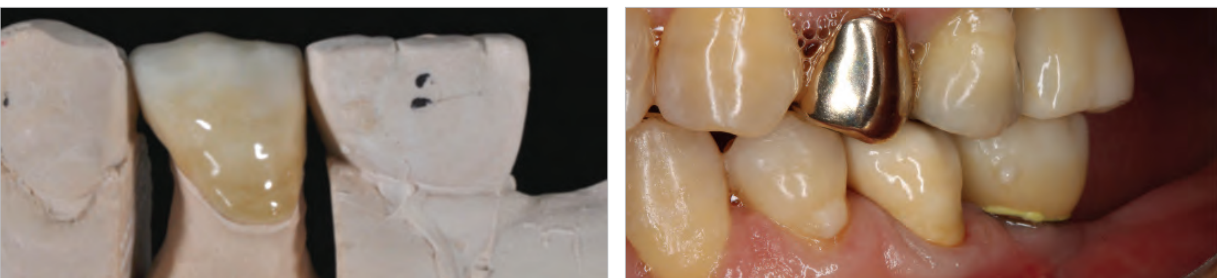
P.F.Z Anterior case



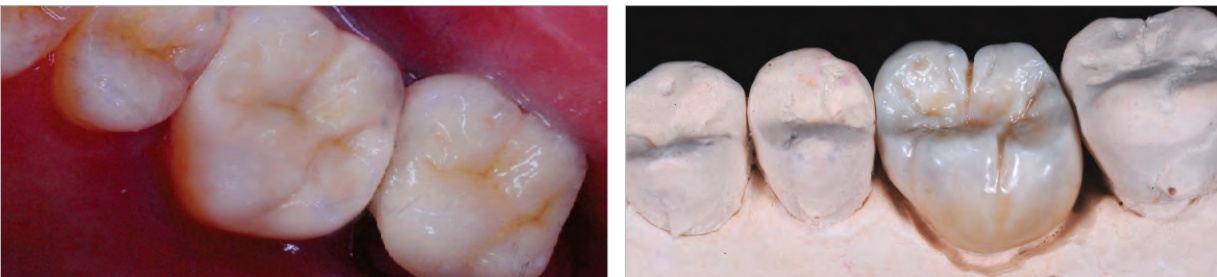
#12, 11, 21 P.F.Z Anterior clinical case



#12, P.F.Z Anterior clinical case



#45, Full ZR + Stain clinical case



#26, Full ZR + Stain clinical case



PERFORMED BY DENTAL CLINICS, UNIVERSITY, AND DENTAL LABS IN KOREA



Denfoline April



ZERO magazine I March



ZERO magazine II March



ZERO magazine II May

